

DOCUMENT 009113 - ADDENDUM

1.1 PROJECT INFORMATION

- A. Project Name: District Office Board Room & 2nd Floor Office Remodel
- B. Owner: Sequim School District No. 323
- C. Owner Project Number: 2023-02-1001
- D. Architect: design2 Last, Inc.
- E. Architect Project Number: 2023-323
- F. Date of Addendum: September 8, 2023

1.2 NOTICE TO BIDDERS

- A. This Addendum is issued to all plan centers and posting entities pursuant to the **Instructions to Bidders**. This Addendum serves to clarify, revise, and supersede information in the Project Manual, Drawings, and previously issued Addenda. Portions of the Addendum affecting the Contract Documents will be incorporated into the Contract by enumeration of the Addendum in the Owner/Contractor Agreement.
- B. The Bidder shall acknowledge receipt of this Addendum in the appropriate space on the Bid Form.
- C. The date for receipt of bids is **changed to the following**, at same time and the original location and the following additional location.
 - 1. Bid Date: **September 19, 2023**.
 - 2. Bid Receipt Locations:
 - a. Sequim School District Office at 503 N. Sequim Avenue, Sequim, WA 98382
 - b. Wenaha Group Federal Way office at 505 S 336th Street, Suite 630, Federal Way, WA 98003
- D. The summary of Addendum #2 changes:
 - 1. Delete reference to E1.0 on the drawing index. There is no sheet E1.0.
 - 2. Note added to sheet E-0.1 deferring any fire alarm redesign scope to Johnson Controls Fire Protection
 - 3. Fire alarm specifications have been added (E-3.3)
 - 4. Note added to sheet E-1.4 for penetrations to existing building and trenching for added exterior power.

1.3 ATTACHMENTS

~~A. This Addendum includes no attachments.~~

B. This Addendum includes the following attached Documents and Specification Sections:

1. Section 004100, Bid Form, dated September 8, 2023, (reissued).

C. This Addendum includes the following attached Sheets:

1. Electrical Sheet E-0.1 (**reissued**).
2. Electrical Sheet E-0.2 (**reissued**).
3. Electrical Sheet E-1.4 (**reissued**).
4. Electrical Sheet E-2.1 (**reissued**).
5. Electrical Sheet E-3.1 (**reissued**).
6. Electrical Sheet E-3.2 (**reissued**).
7. Electrical Sheet E-3.3 (**new**).

END OF DOCUMENT 009113

POWER LEGEND AND SYMBOLS

SYMBOL	DESCRIPTION
	SWITCH AND FUSE ASSEMBLY
	UTILITY COMPANY PULL SECTION LUGS
	GROUNDING CONNECTION TO MAIN BUILDING GROUND SYSTEM U.O.N.
	GROUNDING CONNECTION AT SWITCHGEAR/DISTRIBUTION BOARD WITH NEUTRAL BONDING.
	IN-LINE UTILITY COMPANY METER
	UTILITY METER WITH CIRCUIT TRANSFORMERS (CT'S) METER
	SOLID STATE DEVICE CONNECTED TO THE POWER DISTRIBUTION SYSTEM
	GROUND FAULT PROTECTION DEVICE CONNECTED TO THE POWER DISTRIBUTION SYSTEM
	SURGE PROTECTION DEVICE
	TRANSFORMER WITH SECONDARY GROUND. REFER TO SINGLE LINE DIAGRAM FOR KVA RATING AND GROUNDING REQUIREMENTS.
	ON-SITE GENERATOR SET
	STAINLESS STEEL SURFACE MOUNTED WIREMOLD MOUNTED AT 48" A.F.F. U.O.N. IF POWER AND DATA ARE SHOWN, PROVIDE WITH DUAL CHANNEL RACEWAY. WIREMOLD 4000 SERIES.
	CONDUIT WIRING DESCRIPTION PER FEEDER SCHEDULE ON OTHER PLAN
	CONCRETE ELECTRICAL PULL BOX WITH LID APPROPRIATE FOR INSTALLATION LOCATION. LID SHALL BE LABELED "ELECTRICAL" OR "COMM" ACCORDING TO USE.
	SMOKE FIRE DAMPER
	DUCT MOUNTED SMOKE DETECTOR.
	THERMOSTAT SUPPLIED BY MECHANICAL CONTRACTOR. ELECTRICAL CONTRACTOR SHALL STUB 3/4" C.O. 6" ABOVE CEILING SPACE. PROVIDE BUSHING AND PULL WIRE. IF INSTALLED IN AREA WITH EXPOSED STRUCTURE ABOVE OR HARD LID CEILING, PROVIDE 3/4" C.O. BACK TO ASSOCIATED HVAC UNIT. REFER TO MECHANICAL DETAILS FOR T-STAT MOUNTING HEIGHT REQUIREMENTS. VERIFY LOCATIONS WITH HVAC CONTRACTOR PRIOR TO ROUGH IN.
	CARBON MONOXIDE SENSOR SUPPLIED BY MECHANICAL CONTRACTOR. ELECTRICAL CONTRACTOR SHALL PROVIDE 3/4" GALVANIZED RIGID CONDUIT WITH PULL STRING BACK TO HEAD END CARBON MONOXIDE PANEL. REFER TO MECHANICAL DRAWINGS FOR EXACT EQUIPMENT LOCATIONS AND WIRING DETAILS.
	CEILING MOUNTED PLUG LOAD CONTROLLER.
	CONTACT SENSOR FOR HVAC SHUTDOWN. 4S BOX. MOUNTED ABOVE DOOR OR WINDOW. U.O.N. STUB 3/4" C.O. 6" ABOVE CEILING SPACE. PROVIDE BUSHING AND PULL WIRE. IF INSTALLED IN AREA WITH EXPOSED STRUCTURE ABOVE OR HARD LID CEILING, PROVIDE 3/4" C.O. BACK TO LOCATION OF ASSOCIATED HVAC THERMOSTAT.

POWER LEGEND AND SYMBOLS

SYMBOL	DESCRIPTION
A-1	SUBSCRIPT "A-1" REFERS TO PANEL DESIGNATION WITH CIRCUIT NUMBER. TYPICAL OF ALL RECEPTACLE OUTLETS.
	DUPLEX RECEPTACLE OUTLET, CONVENIENCE. (20 AMPS, 125 VOLTS) MOUNTED +15" A.F.F. TO BOTTOM OF DEVICE U.O.N.
	DOUBLE DUPLEX RECEPTACLE OUTLET, CONVENIENCE. (20 AMPS, 125 VOLTS) MOUNTED +15" A.F.F. TO BOTTOM OF DEVICE U.O.N.
	DUPLEX RECEPTACLE OUTLET, CONVENIENCE. (20 AMPS, 125 VOLTS, GFCI TYPE) MOUNTED +15" A.F.F. TO BOTTOM OF DEVICE U.O.N.
	DUPLEX RECEPTACLE OUTLET, CONVENIENCE. (20 AMPS, 125 VOLTS) WITH MOUNTING HEIGHT HORIZONTALLY ABOVE COUNTER TOP PER ARCHITECTURAL PLANS OR APPROVAL.
	DUPLEX RECEPTACLE OUTLET, CONVENIENCE. (20 AMPS, 125 VOLTS) WITH MOUNTING HEIGHT HORIZONTALLY ABOVE COUNTER TOP PER ARCHITECTURAL PLANS OR APPROVAL.
	CA WSEC COMPLIANT DUPLEX RECEPTACLE OUTLET, HALF-CONTROLLED, CONVENIENCE, WITH PERMANENT MARKING. (20 AMPS, 125 VOLTS) MOUNTED +15" A.F.F. TO BOTTOM OF DEVICE U.O.N.
	CA WSEC COMPLIANT DOUBLE DUPLEX RECEPTACLE OUTLET, HALF-CONTROLLED, CONVENIENCE, WITH PERMANENT MARKING. (20 AMPS, 125 VOLTS) MOUNTED +15" A.F.F. TO BOTTOM OF DEVICE U.O.N.
	SIMPLEX RECEPTACLE OUTLET, CONVENIENCE WITH (2)USB PORTS. (20 AMPS, 125 VOLTS) MOUNTED +15" A.F.F. TO BOTTOM OF DEVICE U.O.N. LEVITON MODEL #F5832.
	WEATHERPROOF DUPLEX RECEPTACLE OUTLET, CONVENIENCE. (20 AMPS, 125 VOLTS) MOUNTED +15" A.F.F. TO BOTTOM OF DEVICE U.O.N.
	DUPLEX RECEPTACLE OUTLET, SINGLE SPLIT-CIRCUIT SWITCHED. (20 AMPS, 125 VOLTS) MOUNTED +15" A.F.F. TO BOTTOM OF DEVICE U.O.N.
	SURFACE MOUNTED DUPLEX RECEPTACLE OUTLET, CONVENIENCE. (20 AMPS, 125 VOLTS) MOUNTED +15" A.F.F. TO BOTTOM OF DEVICE U.O.N.
	RECESSED CEILING MOUNTED DUPLEX RECEPTACLE OUTLET, CONVENIENCE. (20 AMPS, 125 VOLTS) U.O.N.
	ABOVE CEILING, CONCEALED, JUNCTION BOX, WITH COVER, PER NATIONAL ELECTRICAL CODE (NEC) TABLE 314.16(A)(B), 4" SQUARE DEEP, WITH PLASTER RING.
	RECESSED WALL MOUNTED JUNCTION BOX, WITH COVER, PER NATIONAL ELECTRICAL CODE (NEC) TABLE 314.16(A)(B), 4" SQUARE DEEP, WITH PLASTER RING.
	DUPLEX RECEPTACLE, FLUSH IN FLOOR, WATERTIGHT JUNCTION BOX (HINGED BRASS COVER: 20 AMP, 120 VOLT, 2-POLE, 3-WIRE) U.O.N.
	DOUBLE DUPLEX RECEPTACLE, FLUSH IN FLOOR, WATERTIGHT JUNCTION BOX (20 AMP, 120 VOLT, 2-POLE, 3-WIRE) U.O.N.
	JUNCTION BOX, FLUSH IN FLOOR, WATERTIGHT (HINGED BRASS COVER: 20 AMP, 120 VOLT, 2-POLE, 3-WIRE) U.O.N.
	FLOOR BOX NOTE WHERE INDICATED IN AN EXISTING SLAB, PROVIDE SAWCUTTING OF SLAB AS REQUIRED AND EXTEND CONDUIT AND WIRING TO JUNCTION BOX IN NEAREST ACCESSIBLE WALL. DO NOT SAWCUT THROUGH POST TENSION SLABS.
	SPECIALTY OUTLET. VERIFY NEMA CONFIGURATION AS NOTED ON PLANS.
	BRANCH PANELBOARD, WALL MOUNTED, SEE PLANS AND SCHEDULE. (SURFACE MOUNTED)
	BRANCH PANELBOARD, WALL MOUNTED, SEE PLANS AND SCHEDULE. (RECESSED MOUNTED)
	MAIN SWITCHBOARD, POWER OR LIGHT, FLOOR STANDING ENCLOSURE. (SEE SINGLE LINE DIAGRAM AND LOAD SUMMARY)
	DISCONNECT SWITCH H.P. RATED 600 VOLTS RATED. "F" INDICATES FUSE TYPE. FUSES PER APPROVED MANUFACTURERS SHOP DRAWINGS.
	MAGNETIC MOTOR STARTER H.P. RATED (NUMBER INDICATES NEMA SIZE)
	MOUNTING HEIGHT FROM FINISHED FLOOR TO BOTTOM LINE OF OUTLET OR EQUIPMENT. FOR LIGHT FIXTURES, IT IS TO BOTTOM OF FIXTURE.
	CONDUIT STUBBED AND CAPPED, SIZE AND QUANTITIES PER PLANS.
	CONDUIT CONCEALED IN OR UNDER FLOOR, 3/4" U.O.N. COORDINATE WITH G.C.; OR, BURIAL CONDUIT UNDERGROUND IN SCHEDULE - 40 PVC UNLESS NOTED OTHERWISE. VERIFY DEPTH AND TRENCHING WITH G.C.
	DETAIL REFERENCE
	EQUIPMENT REFERENCE
	ELECTRICAL UTILITY PRIMARY
	ELECTRICAL UTILITY SECONDARY
	UTILITY TELEPHONE
	TEMPORARY OVERHEAD CABLING
	1" U.O.N. HOMERUN TO CIRCUITS #1 AND #3 IN PANEL "A". (CROSSMARKS INDICATE NUMBER OF PHASES AND NEUTRAL. PROVIDE GROUND WIRE.)
	GROUND WELL
	EXISTING (DASH INDICATES) ELECTRICAL EQUIPMENT
	TELEPHONE BACKBOARD 2'X4'X3/4" PLYWOOD. PROVIDE 2" CONDUIT TO TELEPHONE POC.
	MOLDED CASE CIRCUIT BREAKER
	MOLDED CASE SHUNT TRIP CIRCUIT BREAKER
	MOLDED CASE DRAW OUT TYPE CIRCUIT BREAKER
	REMOTE CONTROLLED, ELECTRONICALLY OPERATED CIRCUIT BREAKER

LIGHTING LEGEND AND SYMBOLS

SYMBOL	DESCRIPTION
	2'X4' RECESSED LUMINAIRE. FN INDICATES LUMINAIRE TYPE - REFER TO LUMINAIRE SCHEDULE. TYPICAL. SUBSCRIPT 2ab REFERS TO CIRCUIT AND SWITCH LEG 'a' AND 'b'. SUBSCRIPT 2AB REFERS TO CIRCUIT AND ZONE DESIGNATION 'A' AND 'B'. SUBSCRIPT N/L REFERS TO UNSWITCHED LEG. TYPICAL OF ALL LIGHTING.
	2'X4' RECESSED LUMINAIRE WITH 90MIN. EMERGENCY BATTERY BACKUP
	SURFACE MOUNTED DOUBLE FACE EXIT SIGN (UNIVERSAL ARROWS INDICATED AS NEEDED)
	SURFACE MOUNTED SINGLE FACE EXIT SIGN (UNIVERSAL ARROWS INDICATED AS NEEDED)
	SWITCH, SINGLE POLE 20A. MOUNTED 48" A.F.F. TO TOP OF DEVICE. SUBSCRIPTS INDICATE THE FOLLOWING: M - MOTOR RATED 3 - THREE WAY 4 - FOUR WAY K - KEY OPERATED D - DIMMER SWITCH T - TIMED SWITCH
	OCUPANCY SENSOR, DUAL-TECHNOLOGY. SURFACE CEILING MOUNTED. WATT STOPPER MODEL #DT-300 OR LEVITON MODEL #OS20-MOW. PROVIDE WITH POWER PACK(S) AS REQUIRED.
	DUAL TECHNOLOGY OCCUPANCY SENSOR, SURFACE WALL MOUNTED 180" U.O.N. LEVITON MODEL #OSSMT-GD (FOR SINGLE POLE SWITCHING) & LEVITON MODEL #OSSMD-GD (FOR DUAL SWITCHING)
	LOW-VOLTAGE OVERRIDE SWITCH. NUMBER INDICATES OVERRIDE SWITCH. A,B,C, ETC. DESIGNATES AREA AS SHOWN ON LIGHTING SCHEDULE.
	LOW-VOLTAGE DIMMER SWITCH. MOUNTED 48" A.F.F. TO TOP OF DEVICE. 'A,B,C' ETC. - DESIGNATES ZONE CONTROLLED AND QUANTITY OF ZONES AT EACH LOCATION.
	LOW-VOLTAGE OCCUPANCY SENSOR, DUAL-TECHNOLOGY, SURFACE CEILING MOUNTED INTERCONNECTED TO NETWORK LIGHTING CONTROLS.
	CEILING MOUNTED DIGITAL ROOM CONTROLLER INTERCONNECTED TO NETWORK LIGHTING CONTROLS.

SIGNAL LEGEND AND SYMBOLS

SYMBOL	DESCRIPTION
	DATA OUTLET BOX 4S, MOUNTED +15" A.F.F. TO BOTTOM OF DEVICE U.O.N. STUB 3/4" C.O. 6" ABOVE CEILING SPACE. PROVIDE BUSHING AND PULL WIRE. IF INSTALLED IN AREA WITH EXPOSED STRUCTURE ABOVE OR HARD LID CEILING, PROVIDE 3/4" C.O. BACK TO LOCATION OF NEAREST IDF/MDF.
	TELEPHONE OUTLET BOX 4S, MOUNTED +15" A.F.F. TO BOTTOM OF DEVICE U.O.N. STUB 3/4" C.O. 6" ABOVE CEILING SPACE. PROVIDE BUSHING AND PULL WIRE. IF INSTALLED IN AREA WITH EXPOSED STRUCTURE ABOVE OR HARD LID CEILING, PROVIDE 3/4" C.O. BACK TO LOCATION OF NEAREST COMMUNICATIONS CABINET OR TELEPHONE BACKBOARD. "W" INDICATES +42" A.F.F. UNLESS OTHERWISE NOTED.
	COMBINATION TELEPHONE & DATA OUTLET BOX 4S, MOUNTED +15" A.F.F. TO BOTTOM OF DEVICE U.O.N. STUB 3/4" C.O. 6" ABOVE CEILING SPACE. PROVIDE BUSHING AND PULL WIRE. IF INSTALLED IN AREA WITH EXPOSED STRUCTURE ABOVE OR HARD LID CEILING, PROVIDE 3/4" C.O. BACK TO LOCATION OF NEAREST IDF/MDF, COMMUNICATIONS CABINET, OR TELEPHONE BACKBOARD.
	COMBINATION TELEPHONE & DATA OUTLET BOX 4S, MOUNTED HEIGHT HORIZONTALLY ABOVE COUNTER TOP PER ARCHITECTURAL PLANS OR APPROVAL STUB 3/4" C.O. 6" ABOVE CEILING SPACE. PROVIDE BUSHING AND PULL WIRE. IF INSTALLED IN AREA WITH EXPOSED STRUCTURE ABOVE OR HARD LID CEILING, PROVIDE 3/4" C.O. BACK TO LOCATION OF NEAREST IDF/MDF, COMMUNICATIONS CABINET, OR TELEPHONE BACKBOARD.
	FLUSH FLOOR MOUNTED COMBINATION TELEPHONE & DATA OUTLET BOX. U.O.N.
	TELEVISION OUTLET BOX 4S, MOUNTED +15" A.F.F. TO BOTTOM OF DEVICE U.O.N. STUB 3/4" C.O. 6" ABOVE CEILING SPACE. PROVIDE BUSHING AND PULL WIRE. IF INSTALLED IN AREA WITH EXPOSED STRUCTURE ABOVE OR HARD LID CEILING, PROVIDE 3/4" C.O. BACK TO LOCATION OF CABLE TELEVISION TERMINAL OR COMMUNICATIONS CABINET.
	CEILING MOUNTED PROJECTOR.
	PROVIDE 4S OUTLET BOX AT +48" A.F.F. AND STUB 3/4" C.O. 6" ABOVE CEILING SPACE FOR CARD READER. PROVIDE BUSHING AND PULL WIRE. VERIFY ADDITIONAL REQUIREMENTS WITH LOW VOLTAGE VENDOR PRIOR TO ROUGH-IN.

SEQUIM SD #323
Office Board Room & 2nd Floor Office Remodel
503 N Sequim Ave, Sequim, WA 98382

REVISION SCHEDULE	
ADDENDUM #1	08/22/23
ADDENDUM #2	09/12/23

JOB NO.	2022-080
DATE	08-23-2023
DRAWN	AE
REVIEWED	LM

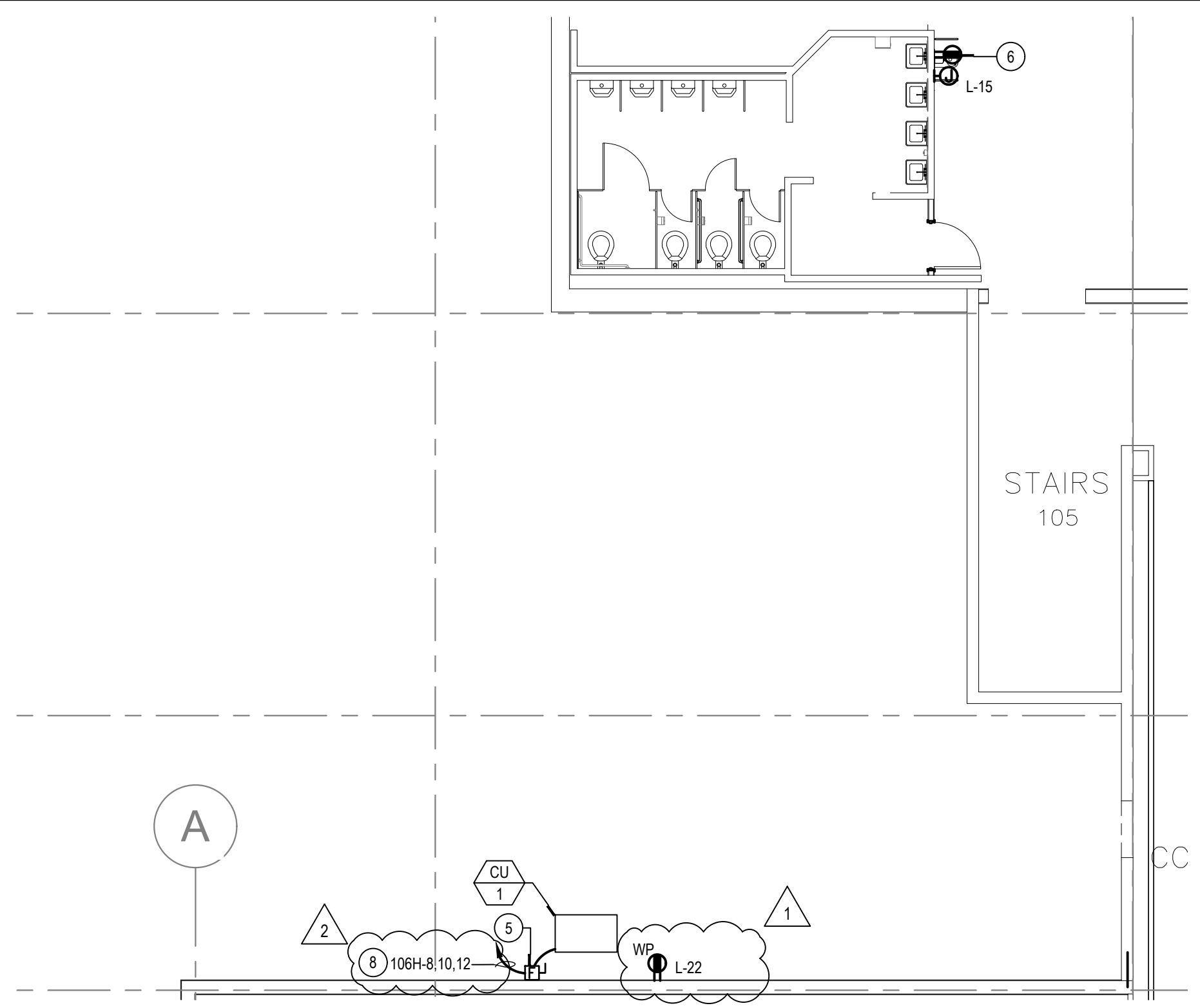
SHEET NAME
ELECTRICAL LEGENDS AND NOTES

SHEET NO.
E-0.2

DESIGN WEST ENGINEERING
 MECHANICAL • ELECTRICAL • ENERGY CONSULTANTS
 110 James St., Suite 106
 Edmonds, WA 98020
 Phone: 425-438-9700
 Fax: 425-438-9700
 Email: codd@designwesteng.com

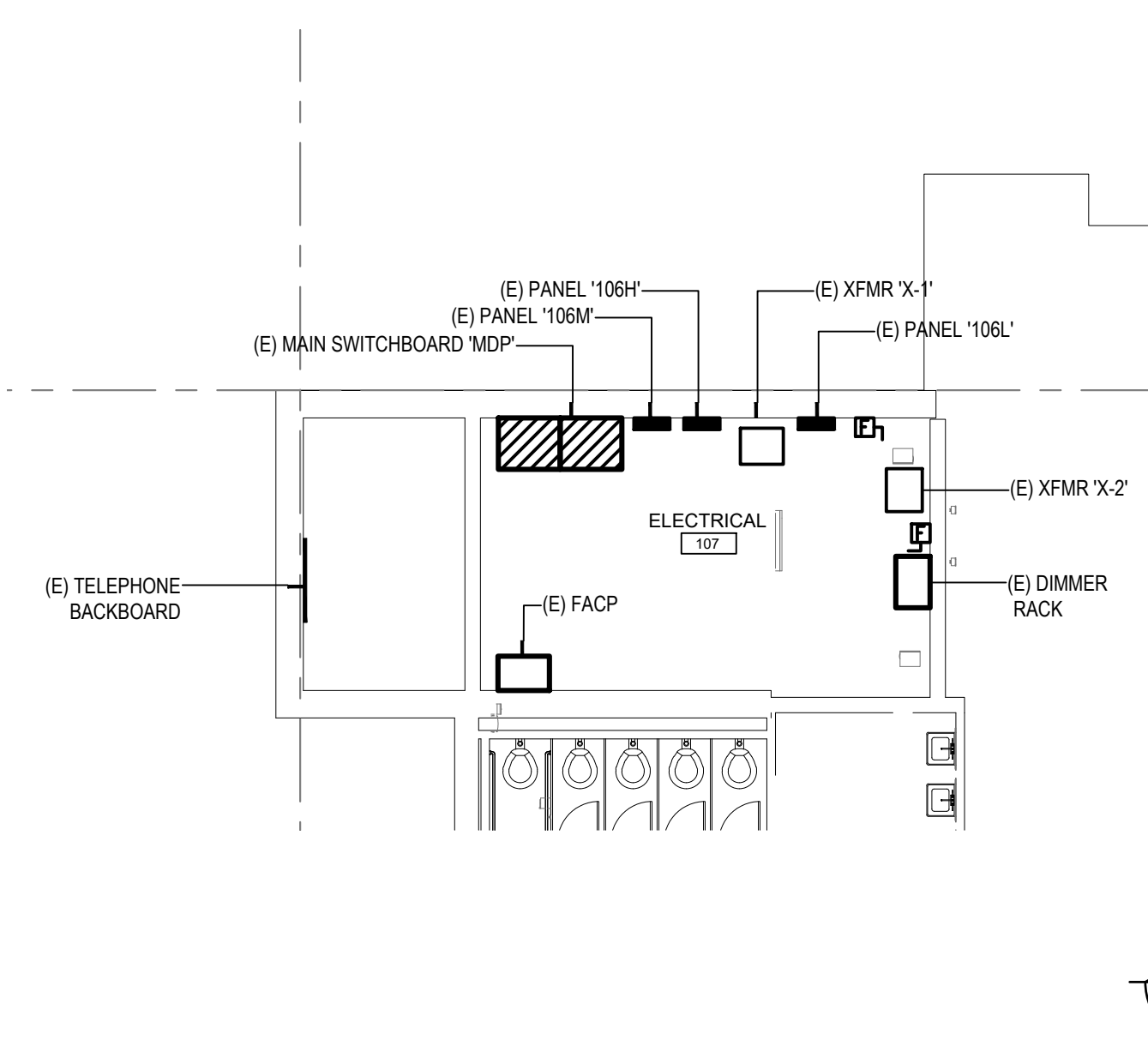
543 Main St., Suite 101
 Edmonds, WA 98020
 o. 425-673-7269 c. 907-317-5040
 www.design2LAST.com

A: L:\PROJECT\2021\22-080 SEQUIM SCHOOL DISTRICT BOARD ROOM\22-080 E-ENLARGED\PLNS - 2023-09-06 - BETHLEHEM ZEKARIAS



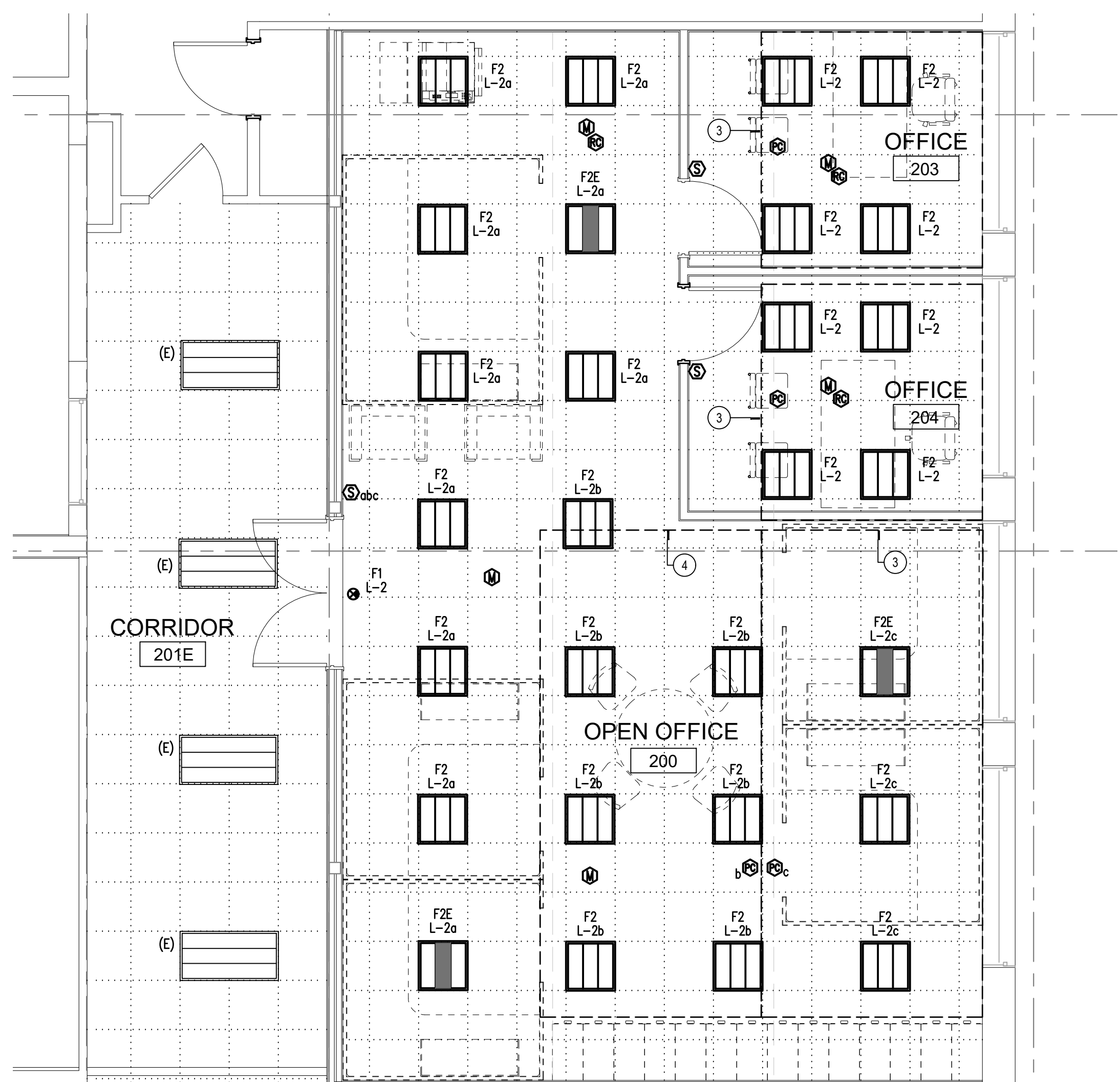
CONDENSING UNIT AND DRINKING FOUNTAIN POWER PLAN

SCALE: 1/8" = 1'-0" 3



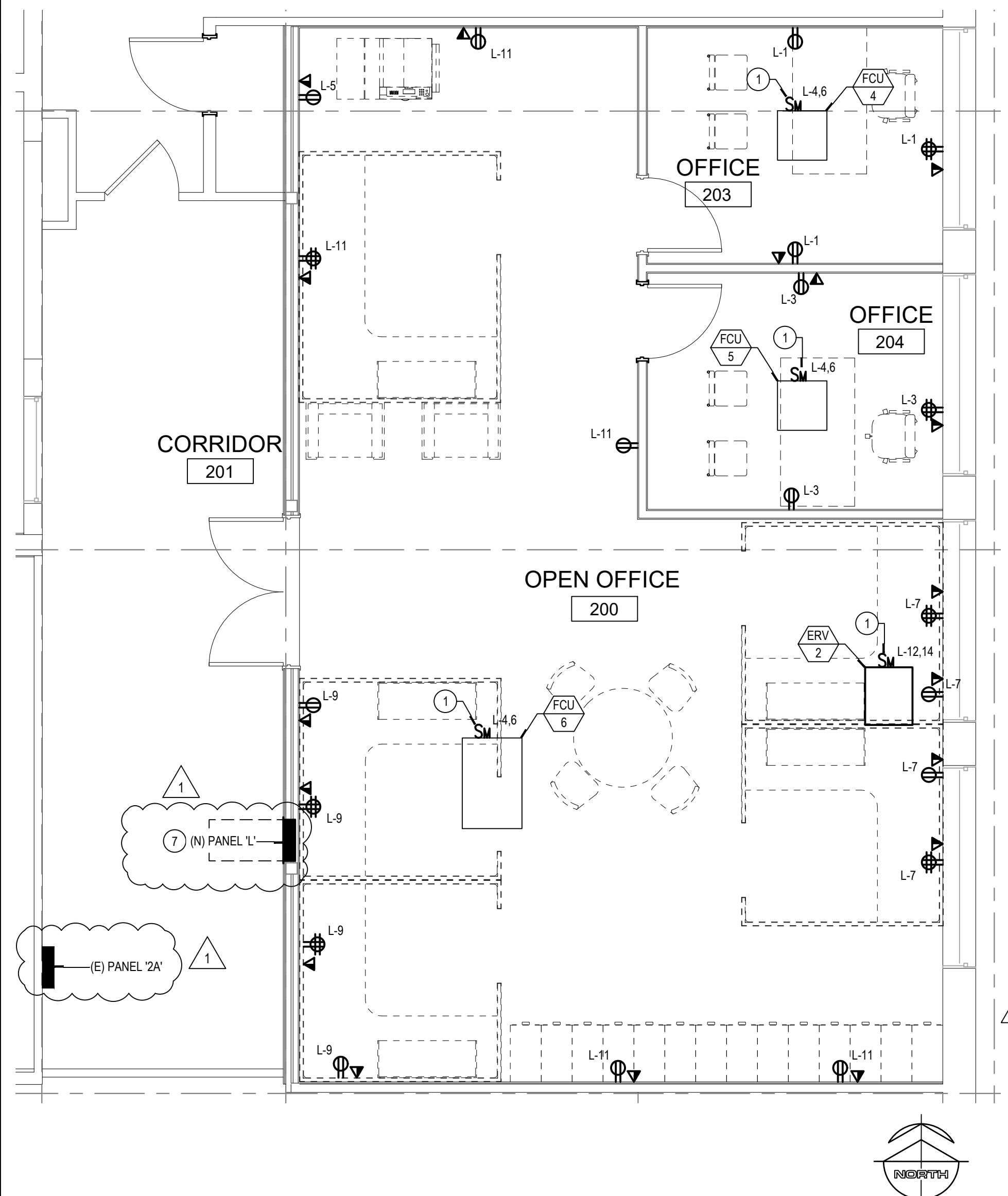
FIRST FLOOR ELECTRICAL ROOM

SCALE: 1/8" = 1'-0" 1



SECOND FLOOR LIGHTING PLAN

SCALE: 1/4" = 1'-0" 4



SECOND FLOOR POWER & SIGNAL PLAN

SCALE: 1/4" = 1'-0" 2

GENERAL NOTES

1. COORDINATE POWER AND DATA DEVICE LOCATIONS, AND DEVICE PLATE COLOR WITH ARCHITECT.
2. NO PIPING, DUCTS OR EQUIPMENT FOREIGN TO ELECTRICAL EQUIPMENT SHALL BE PERMITTED TO BE LOCATED WITHIN A SPACE EXTENDING FROM FLOOR TO A HEIGHT OF 6' ABOVE THE EQUIPMENT. NEC 110.26(E)1.
3. COORDINATE LIGHT FIXTURE LOCATIONS AND LIGHT SWITCH LOCATIONS, COLOR, AND STYLE WITH ARCHITECT.
4. WHERE OCCUPANCY SENSORS ARE SHOWN ON PLANS, VERIFY WATTAGE AND COVERAGE OF PRODUCT PROVIDED IS ADEQUATE FOR SPACE TO BE CONTROLLED. COVERAGE IS TO BE ADJUSTED TO AVOID ACCIDENTAL ACTIVATION OUTSIDE OF AREA. VERIFY WIRING REQUIREMENTS TO ADDITIONAL SENSORS, ROOM CONTROLLERS, RELAY PACKS, ETC WITH PRODUCT BEING PROVIDED. OCCUPANCY SENSORS SHALL NOT BE LOCATED WITHIN FOUR FEET OF ANY HVAC DIFFUSER.
5. WHERE DAYLIGHT SENSORS ARE SHOWN ON PLANS, LOCATION SHOWN IS DIAGRAMMATICAL. VERIFY LOCATION IS PER MANUFACTURER RECOMMENDATIONS BASED ON TYPE OF SENSOR (OPEN/CLOSED LOOP). VERIFY WIRING REQUIREMENTS TO ADDITIONAL SENSORS, ROOM CONTROLLERS, RELAY PACKS, ETC WITH PRODUCT BEING PROVIDED.
6. PROVIDE NON-SWITCHED 'HOT' POWER WIRE TO BATTERY PACK CHARGING/SENSOR IN FIXTURE.
7. REFER TO LIGHTING CONTROL DETAILS FOR WIRING AND CONDUIT REQUIREMENTS. CONTRACTOR SHALL PROVIDE ALL WIRING AND CONDUITS REQUIRE BY MANUFACTURER TO FIXTURES AND CONTROLS.
8. FINAL MOUNTING LOCATIONS OF ALL OCCUPANCY AND PHOTOCELL DEVICES SHALL COORDINATED WITH MANUFACTURERS RECOMMENDATIONS AND FIELD ADJUSTED WITH REPRESENTATIVE AS NECESSARY.
9. COORDINATE POWER AND DATA DEVICE LOCATIONS, AND DEVICE PLATE COLOR WITH ARCHITECT.
10. REFER TO MECHANICAL AND PLUMBING PLANS FOR THE EXACT LOCATION OF HVAC EQUIPMENT AND ADDITIONAL WIRING REQUIREMENTS.
11. PROVIDE DUCT DETECTOR POWER AND CONNECTIONS AS INDICATED ON MECHANICAL DRAWINGS.
12. PROVIDE FLEXIBLE SEAL TYPE CONDUIT FOR CONNECTION TO ALL HVAC EQUIPMENT.
13. ALL EXTERIOR ELECTRICAL EQUIPMENT SHALL BE NEMA 3R.
14. ALL EXTERIOR RECEPTACLE OUTLETS SHALL BE GFCI TYPE.
15. PROVIDE HEAVY DUTY DISCONNECT SWITCHES WITH DUAL ELEMENT FUSES TO MATCH MOTOR H.P. RATING.
16. WHERE EQUIPMENT RATED 800 AMPS OR MORE. DOOR IN ELECTRICAL ROOM SHALL OPEN IN THE DIRECTION OF EGRESS AND SHALL BE EQUIPPED WITH LISTED PANIC HARDWARE PER NEC 110.26(C)(3).
8. PROVIDE 3/4" CONDUIT FOR ELECTRICAL CIRCUITS U.O.N.
9. CONTRACTOR SHALL PROVIDE CONDUCTORS AND CONDUITS REQUIRED FOR ALL BRANCH CIRCUIT AND FEEDERS FOR CIRCUIT SIZES NOT SHOWN. REFER TO PANEL SCHEDULES FOR CONDUCTOR AND CONDUIT SIZES.
10. EXCEPT FOR THE HOMERUN INDICATION, CONDUIT AND WIRING SHOWN FOR REFERENCE ONLY. IT IS THE RESPONSIBILITY OF THE ELECTRICAL CONTRACTOR TO PROVIDE THE NUMBER OF CONDUCTORS REQUIRED FOR HOT LEGS, NEUTRAL AND GROUNDING AT EACH DEVICE FOR PROPER BRANCH CIRCUITING.

CONSTRUCTION NOTES

- 1 PROVIDE AND INSTALL NEMA 1 MOTOR RATED SNAP SWITCH.
- 2 CONNECT NEW LIGHT FIXTURE TO EXISTING LIGHTING CIRCUIT WITHIN CORRIDOR.
- 3 PRIMARY SIDELIT DAYLIT ZONE, PER WASHINGTON STATE ENERGY CODE.
- 4 SECONDARY SIDELIT DAYLIT ZONE, PER WASHINGTON STATE ENERGY CODE.
- 5 PROVIDE AND INSTALL 30A 3P H.D. WEATHERPROOF NEMA 3R RATED FUSED DISCONNECT. FUSING PER MECHANICAL EQUIPMENT MANUFACTURERS REQUIREMENTS. VERIFY EXACT LOCATION AND REQUIREMENTS WITH MECHANICAL CONTRACTOR.
- 6 REUSE EXISTING CIRCUIT FOR NEW DRINKING FOUNTAIN. VERIFY EXACT LOCATION AND REQUIREMENTS WITH MECHANICAL CONTRACTOR.
- 7 PROVIDE MINIMUM 3'-0" LEVEL CLEARANCE IN FRONT OF ELECTRICAL EQUIPMENT. PER NEC 110.26.
- 8 CONTRACTOR TO FIELD VERIFY PATH FOR CONDUIT ROUTING. ALL BUILDING PENETRATIONS ARE TO BE WATERTIGHT.

543 Main St, Suite 101
Edmonds, WA 98020
o. 425-673-7269 c. 907-317-5040
www.design2LAST.com

SEQUIM SD #323
Office Board Room & 2nd Floor Office Remodel
503 N Sequim Ave, Sequim, WA 98382

REVISION SCHEDULE	
ADDENDUM #1	08/22/23
ADDENDUM #2	09/12/23

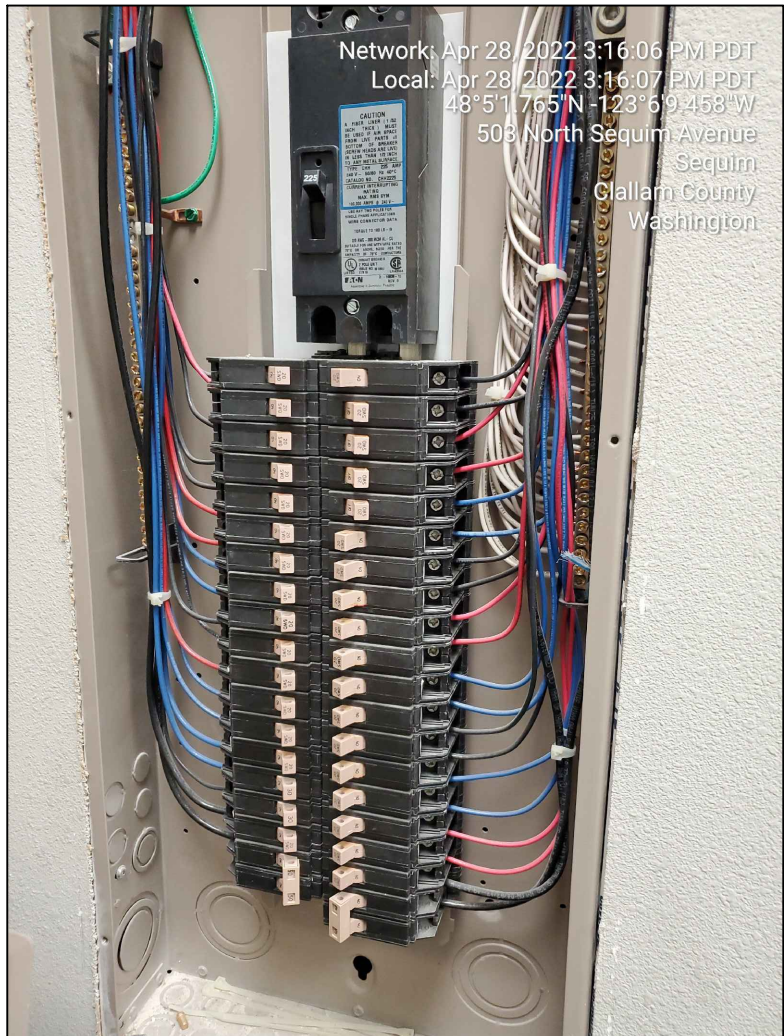
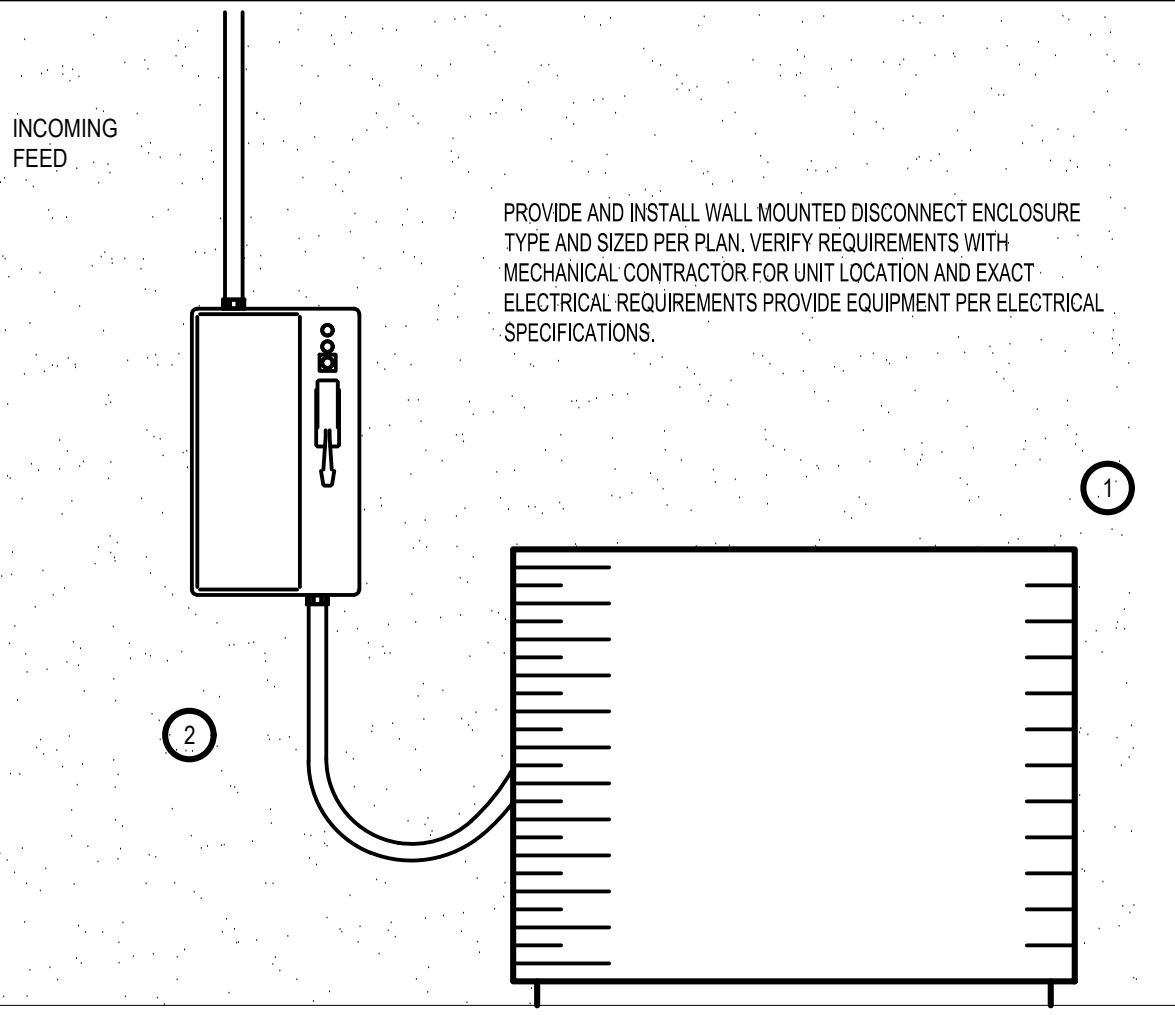
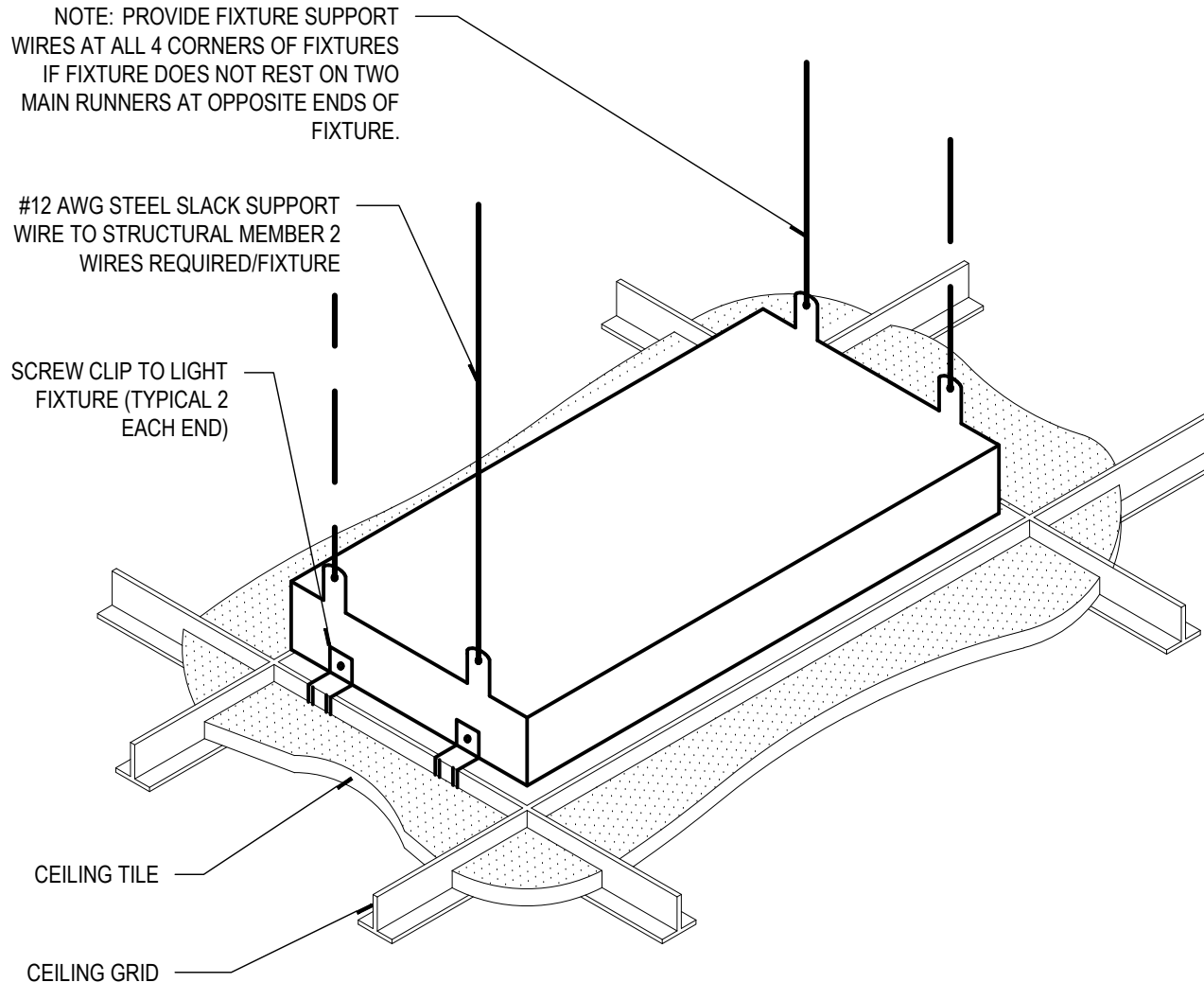
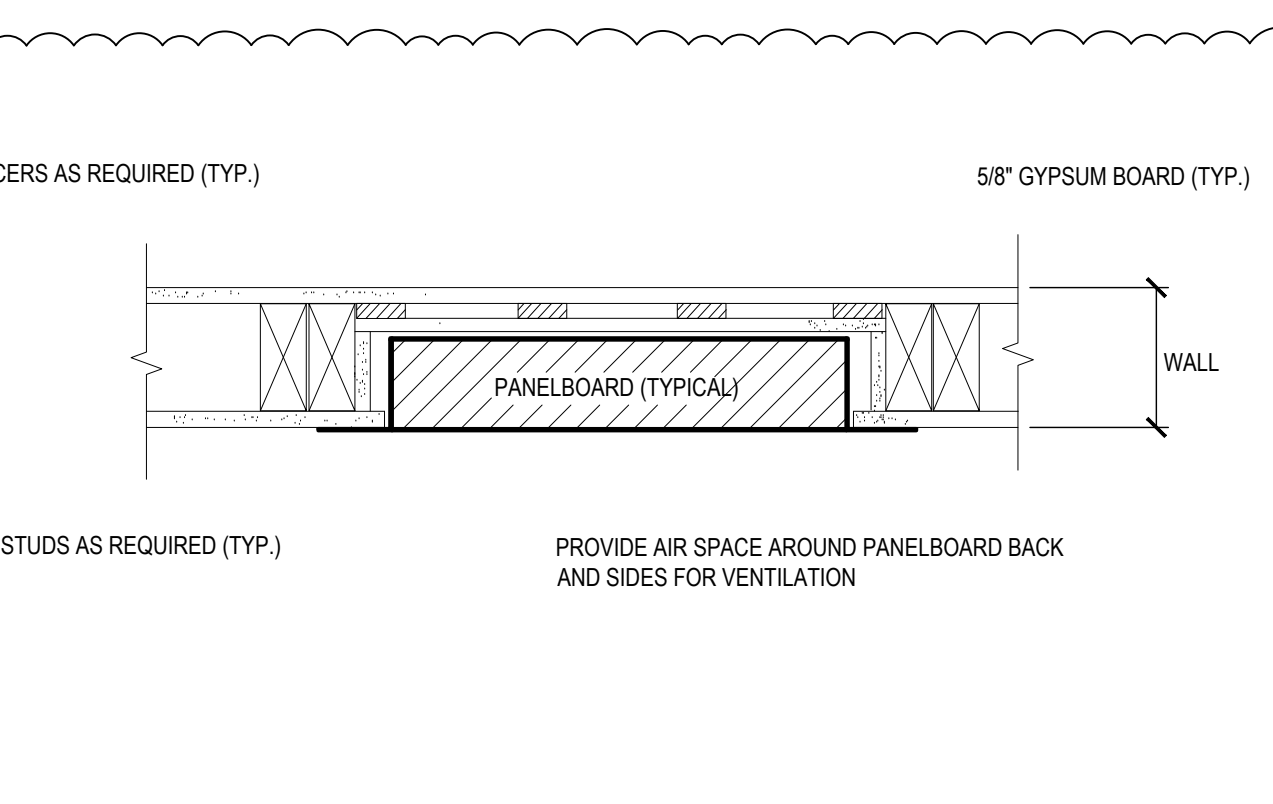
JOB NO.	2022-080
DATE	08-23-2023
DRAWN	AE
REVIEWED	LM


SHEET NAME
ENLARGED ELECTRICAL
FLOOR PLANS

SHEET NO.
E-1.4

DESIGN WEST ENGINEERING
MECHANICAL • ELECTRICAL • ENERGY CONSULTANTS

110 James St., Suite 106
Edmonds, WA 98020
Phone: 425-438-9700
Fax: 909-890-3770
Email: codd@designwesteng.com

		 <p style="font-size: 8px; margin-top: 5px;">Network: Apr 28, 2022 3:16:06 PM PDT Local: Apr 28, 2022 3:16:07 PM PDT 8°5'11.765"N 108°5'59.468"W 503 North Sequim Avenue Sequim Gilliam County Washington</p>	 <p style="font-size: 8px; margin-top: 5px;">INCOMING FEED</p> <p style="font-size: 8px; margin-top: 5px;">PROVIDE AND INSTALL WALL MOUNTED DISCONNECT ENCLOSURE TYPE AND SIZED PER PLAN. VERIFY REQUIREMENTS WITH MECHANICAL CONTRACTOR FOR UNIT LOCATION AND EXACT ELECTRICAL REQUIREMENTS PROVIDE EQUIPMENT PER ELECTRICAL SPECIFICATIONS.</p> <p style="font-size: 8px; margin-top: 5px;">CONSTRUCTION NOTES: ① MECHANICAL UNIT ② SEAL/TITE WEATHERPROOF FLEXIBLE CONDUIT CONNECTION.</p>	<div style="text-align: right; font-size: 8px;"> <p>543 Main St., Suite 101 Edmonds, WA 98020 o. 425-673-7269 c. 907-317-5040 www.design2LAST.com</p> <p>design2 LAST INC.</p> </div>														
- 10	- 7	EXISTING PANEL '2A' 4	MECHANICAL UNIT DISCONNECT 1	<div style="writing-mode: vertical-rl; transform: rotate(180deg); font-size: 10px; font-weight: bold;"> SEQUIM SD #323 Office Board Room & 2nd Floor Office Remodel 503 N Sequim Ave, Sequim, WA 98382 </div>														
			 <p style="font-size: 8px; margin-top: 5px;">NOTE: PROVIDE FIXTURE SUPPORT WIRES AT ALL 4 CORNERS OF FIXTURES IF FIXTURE DOES NOT REST ON TWO MAIN RUNNERS AT OPPOSITE ENDS OF FIXTURE.</p> <p style="font-size: 8px; margin-top: 5px;">#12 AWG STEEL SLACK SUPPORT WIRE TO STRUCTURAL MEMBER 2 WIRES REQUIRED/FIXTURE</p> <p style="font-size: 8px; margin-top: 5px;">SCREW CLIP TO LIGHT FIXTURE (TYPICAL 2 EACH END)</p> <p style="font-size: 8px; margin-top: 5px;">CEILING TILE</p> <p style="font-size: 8px; margin-top: 5px;">CEILING GRID</p> <p style="font-size: 8px; margin-top: 5px;">GENERAL NOTES: 1. REFER TO ARCHITECTURAL DRAWINGS FOR TYPE OF CEILING GRID AND TILE SYSTEM.</p>															
- 11	- 8	- 5	LIGHTING FIXTURE SUSPENSION 2															
			 <p style="font-size: 8px; margin-top: 5px;">SPACERS AS REQUIRED (TYP.)</p> <p style="font-size: 8px; margin-top: 5px;">5/8" GYPSUM BOARD (TYP.)</p> <p style="font-size: 8px; margin-top: 5px;">PANELBOARD (TYPICAL)</p> <p style="font-size: 8px; margin-top: 5px;">WALL</p> <p style="font-size: 8px; margin-top: 5px;">METAL STUDS AS REQUIRED (TYP.)</p> <p style="font-size: 8px; margin-top: 5px;">PROVIDE AIR SPACE AROUND PANELBOARD BACK AND SIDES FOR VENTILATION</p> <p style="text-align: center; font-weight: bold; font-size: 10px; margin-top: 10px;">RECESSED PANELBOARD 3</p>	<table border="1" style="width: 100%; font-size: 8px;"> <tr> <th colspan="2">REVISION SCHEDULE</th> </tr> <tr> <td style="text-align: center;">ADDENDUM #1</td> <td style="text-align: center;">08/22/23</td> </tr> <tr> <td style="text-align: center;">ADDENDUM #2</td> <td style="text-align: center;">09/12/23</td> </tr> </table> <table border="1" style="width: 100%; font-size: 8px; margin-top: 5px;"> <tr> <td>JOB NO.</td> <td>2022-080</td> </tr> <tr> <td>DATE</td> <td>08-23-2023</td> </tr> <tr> <td>DRAWN</td> <td>AE</td> </tr> <tr> <td>REVIEWED</td> <td>LM</td> </tr> </table> <p style="font-size: 8px; margin-top: 5px;">SHEET NAME ELECTRICAL DETAILS</p> <p style="font-size: 8px; margin-top: 5px;">SHEET NO. E-2.1</p>	REVISION SCHEDULE		ADDENDUM #1	08/22/23	ADDENDUM #2	09/12/23	JOB NO.	2022-080	DATE	08-23-2023	DRAWN	AE	REVIEWED	LM
REVISION SCHEDULE																		
ADDENDUM #1	08/22/23																	
ADDENDUM #2	09/12/23																	
JOB NO.	2022-080																	
DATE	08-23-2023																	
DRAWN	AE																	
REVIEWED	LM																	
- 12	- 9	- 6																



LEONARD P. M.A.
54850
REGISTERED
PROFESSIONAL ENGINEER

110 James St., Suite 106
Edmonds, WA 98020
Phone: 425-438-9700
Fax: 909-890-3770
Email: codd@designwesteng.com

DESIGN WEST ENGINEERING

MECHANICAL • ELECTRICAL • ENERGY CONSULTANTS

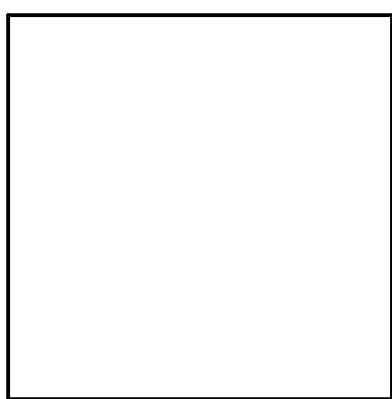
ELECTRICAL SPECIFICATIONS

E. ENCLOSURE FINISH FOR INDOOR UNITS: FACTORY-APPLIED FINISH IN MANUFACTURERS STANDARD GRAY FINISH OVER A RUST-INHIBITING PRIMER ON TREATED METAL SURFACE.
F. BARRIERS: BETWEEN ADJACENT SWITCHBOARD SECTIONS.
G. UTILITY METERING COMPARTMENT: FABRICATED COMPARTMENT AND SECTION COMPLYING WITH UTILITY COMPANYS REQUIREMENTS. IF SEPARATE VERTICAL SECTION IS REQUIRED FOR UTILITY METERING, MATCH AND ALIGN WITH BASIC SWITCHBOARD.
H. BUS TRANSITION AND INCOMING PULL SECTIONS: MATCHED AND ALIGNED WITH BASIC SWITCHBOARD.
I. BUSES AND CONNECTIONS: THREE PHASE, FOUR WIRE, UNLESS OTHERWISE INDICATED.
1. PHASE- AND NEUTRAL-BUS MATERIAL: HARD-DRAWN COPPER OF 98 PERCENT CONDUCTIVITY WITH FEEDER CIRCUIT-BREAKER LINE CONNECTIONS. IF BUS IS COPPER, USE COPPER FOR FEEDER CIRCUIT-BREAKER LINE CONNECTIONS.
2. LOAD TERMINALS: INSULATED, RIGIDLY BRACED, SILVER-PLATED, COPPER RUNBACK BUS EXTENSIONS EQUIPPED WITH PRESSURE CONNECTORS FOR OUTGOING CIRCUIT CONDUCTORS. PROVIDE LOAD TERMINALS FOR FUTURE CIRCUIT-BREAKER POSITIONS AT FULL AMPERE RATING OF CIRCUIT-BREAKER POSITION.
3. GROUND BUS: 1/4-BY-2-INCH- (6-BY-50-MM) MINIMUM-SIZE, HARD-DRAWN COPPER OF 98 PERCENT CONDUCTIVITY, EQUIPPED WITH PRESSURE CONNECTORS FOR FEEDER AND BRANCH-CIRCUIT GROUND CONDUCTORS. FOR BUSWAY FEEDERS, EXTEND INSULATED EQUIPMENT GROUNDING CABLE TO BUSWAY GROUND CONNECTION AND SUPPORT CABLE AT INTERVALS IN VERTICAL RUN.
4. CONTACT SURFACES OF BUSES: SILVER PLATED.
5. MAIN PHASE BUSES, NEUTRAL BUSES, AND EQUIPMENT GROUND BUSES: UNIFORM CAPACITY FOR ENTIRE LENGTH OF SWITCHBOARD'S MAIN AND DISTRIBUTION SECTIONS. PROVIDE FOR FUTURE EXTENSIONS FROM BOTH ENDS.
6. ISOLATION BARRIER ACCESS PROVISIONS: PERMIT CHECKING OF BUS-BOLT TIGHTNESS.
7. NEUTRAL BUSES: 100 PERCENT OF THE AMPACITY OF PHASE BUSES, UNLESS OTHERWISE INDICATED, EQUIPPED WITH PRESSURE CONNECTORS FOR OUTGOING CIRCUIT NEUTRAL CABLES. BUS EXTENSIONS FOR BUSWAY FEEDER NEUTRAL BUS ARE BRACED.
J. FUTURE DEVICES: EQUIP COMPARTMENTS WITH MOUNTING BRACKETS, SUPPORTS, BUS CONNECTIONS, AND APPURTENANCES AT FULL RATING OF CIRCUIT-BREAKER COMPARTMENT.
K. EQUIP DISTRIBUTION SECTIONS WITH FULL HEIGHT VERTICAL BUSSING TO ACCOMMODATE MAXIMUM UTILIZATION OF SPACE FOR DEVICES.
2.13 CIRCUIT AND MOTOR DISCONNECTS
A. DISCONNECT (SAFETY) SWITCHES SHALL BE FUSED, HEAVY DUTY TYPE SWITCHES MEETING NEMA SPECIFICATIONS. SWITCHES SHALL BE PROVIDED WITH REJECTION TYPE FUSE BLOCKS. PROVIDE SWITCHES WITH THE NUMBER OF POLES, THE VOLTAGE, CURRENT AND HORSEPOWER RATINGS AS REQUIRED. PROVIDE EXTERNALLY OPERABLE QUICK-MAKE, QUICK-BREAK TYPE MECHANISM WITH COVER INTERLOCK AND PADLOCKABLE IN EITHER THE OPEN OR CLOSED POSITION.
B. SWITCHES SHALL BE NEMA 3R (RAIN TIGHT ENCLOSURE) WHERE INDICATED TO BE OUTDOORS WEATHERPROOF.
C. PROVIDE NAMEPLATE INDICATING EQUIPMENT SERVED. ALL GENERAL SNAP SWITCHES OPERATING MOTOR LOADS SHALL BE HORSEPOWER RATED OR BE RATED AT LEAST 125% OF THE FULL LOAD CURRENT.
2.15 ELECTRICAL CONNECTIONS
A. UNLESS OTHERWISE NOTED, ALL WIRING FOR MOTORS, STARTERS, CONTROLS, AND EQUIPMENT SHALL BE PROVIDED BY THE ELECTRICAL CONTRACTOR. WHERE MOTORS FOR MECHANICAL EQUIPMENT ARE FURNISHED BY OTHER DIVISIONS, WIRING SHALL BE THE RESPONSIBILITY OF THE ELECTRICAL CONTRACTOR, EXCEPT WHERE WIRED INTEGRALLY WITH THE EQUIPMENT.
B. CONNECTION AND CONTROL DIAGRAMS FOR ALL MECHANICAL AND CONTROL EQUIPMENT SHALL BE FURNISHED UNDER OTHER DIVISIONS, AND BE APPROVED BY THE OWNER FOR CONNECTION BY THE ELECTRICAL CONTRACTOR.
2.16 SUPPORTING DEVICES
ALL EQUIPMENT CONDUITS SHALL BE SUPPORTED, ANCHORED AND BRACED IN ACCORDANCE WITH THE MOST STRINGENT CODES AND REQUIREMENTS.
PART 3 EXECUTION
3.01 WORKMANSHIP AND COMPLETION OF INSTALLATION
A. WORKMANSHIP AND NEAT APPEARANCE SHALL BE AS IMPORTANT AS THE ELECTRICAL AND MECHANICAL EFFICIENCY. DEFECTIVE AND DAMAGED MATERIALS SHALL BE REPLACED OR REPAIRED PRIOR TO FINAL INTERPRETATIONS INCLUDED. ANY DEFICIENCY PERTAINING TO EITHER WORKMANSHIP OR MATERIALS FOUND BY THE INSPECTOR SHALL BE CORRECTED WITHOUT ADDITIONAL COST TO THE OWNER.
B. THE CONTRACTOR SHALL MAINTAIN ON JOB SITE A SET OF THE WORKING DRAWINGS WHICH SHALL BE UPDATED DAILY IN DETAIL FOR WORK ACCOMPLISHED UPON COMPLETION OF THE WORK. A SET OF REPRODUCIBLE CONTRACT DRAWINGS SHALL BE OBTAINED FROM THE GENERAL CONTRACTOR AND ALL CHANGES AS NOTED ON THE RECORD SET OF PRINTS SHALL BE INCORPORATED THEREON WITH RED INK IN A NEAT, LEGIBLE, UNDERSTANDABLE AND PROFESSIONAL MANNER.
C. ALL EQUIPMENT AND MATERIAL CONNECTED WITH THIS PROJECT SHALL BE INSTALLED COMPLETE, THOROUGHLY CLEANED, AND ALL RESIDUE REMOVED FROM INSIDE SURFACES. EXTERIOR SURFACES OF ALL MATERIAL AND EQUIPMENT SHALL BE CLEANED AND DELIVERED IN A PERFECT, UNBLEMISHED CONDITION.
D. UPON COMPLETION OF THE INSTALLATION AND AS A CONDITION OF ITS ACCEPTANCE FURNISH ONE COPY OF THE FINAL INSPECTION CERTIFICATE TO THE OWNER.
3.02 PREPARATION COORDINATION.
A. THE CONTRACTOR SHALL COORDINATE THIS WORK WITH ALL OTHER CONTRACTORS FURNISHING LABOR, MATERIALS AND WORK, SO THAT THE WORK AS WHOLE SHALL BE EXECUTED AND COMPLETED WITHOUT CONFLICT OR DELAY.
B. EXAMINE THE DRAWINGS AND SPECIFICATIONS AND DETERMINE THE WORK TO BE PERFORMED BY THE ELECTRICAL, MECHANICAL AND OTHER TRADES. PROVIDE THE TYPE AND AMOUNT OF ELECTRICAL MATERIALS AND EQUIPMENT NECESSARY TO PLACE THIS WORK IN PROPER OPERATION, COMPLETELY WIRED TESTED AND READY FOR USE. THIS SHALL INCLUDE ALL CONDUIT, WIRE, DISCONNECTS, RELAYS, AND OTHER DEVICES FOR THE REQUIRED OPERATION SEQUENCE OF ALL ELECTRICAL, MECHANICAL, AND OTHER SYSTEMS OR EQUIPMENT.
C. PERFORM ALL WORK IN A MANNER WHICH WILL NOT CAUSE UNNECESSARY INCONVENIENCE OR DANGER TO THE OCCUPANTS, NOR INTERFERE WITH THE ACTIVITIES IN THE BUILDING.
D. THE CONTRACTOR SHALL COORDINATE AND SCHEDULE EACH POWER INTERRUPTION WITH OWNER, AND SHALL PROVIDE AT LEAST TWO WEEKS NOTICE OF PROPOSED INTERRUPTION AND WORK TO BE ACCOMPLISHED.
3.03 TRENCHING AND BACKFILLING

A. PERFORM ALL SUCH TRENCHING AND BACKFILLING IN ACCORDANCE WITH DRAWING DETAILS.
3.04 CORE CUTTING, DRILLING, AND PATCHING
A. NO HOLES WILL BE ALLOWED IN ANY STRUCTURAL MEMBERS WITHOUT THE WRITTEN APPROVAL OF THE ARCHITECT OR STRUCTURAL ENGINEER AND GENERAL CONTRACTOR.
3.05 INSTALLATION
A. WORKMANSHIP IS TO BE NEAT, BY EXPERIENCED WORKMEN WITH ADEQUATE SUPERVISION, AND IN LINE WITH NORMAL INDUSTRY WORK PRACTICES.
B. MAINTAIN WORKING CLEARANCE AROUND ELECTRICAL EQUIPMENT, IN ACCORDANCE WITH CODE REQUIREMENTS AS A MINIMUM.
C. WHERE LIGHTING FIXTURES AND OTHER ELECTRICAL ITEMS ARE SHOWN IN CONFLICT WITH LOCATIONS OF STRUCTURAL MEMBERS AND MECHANICAL OR OTHER EQUIPMENT, FURNISH AND INSTALL ALL REQUIRED SUPPORTS AND WIRING TO CLEAR THE ENCROACHMENT.
D. VERIFY LOCATION OF EACH OUTLET FOR POWER, SIGNAL, TELEPHONE/DATA, AND EACH LIGHTING FIXTURE WITH ARCHITECT PRIOR TO ROUGH-IN. INCLUDE IN BID COST OF RELOCATING EACH ITEM WITHIN TEN-FEET RADIUS OF ITS INDICATED LOCATION.
E. ALL CONDUIT TO BE RUN CONCEALED UNLESS OTHERWISE NOTED. ALL CONDUITS SHALL BE ROUTED OVERHEAD IN CEILING SPACES. NO CONDUITS SHALL BE PERMITTED IN CONCRETE SLAB, MASONRY WALLS UNLESS SPECIFICALLY SO INDICATED. CONDUIT SHALL BE RUN SO AS NOT TO INTERFERE WITH OTHER PIPING FIXTURES OR EQUIPMENT.
F. WHERE ALLOWED, EXPOSED CONDUIT RUNS SHALL BE INSTALLED PARALLEL OR PERPENDICULAR TO WALLS, STRUCTURAL MEMBERS, OR INTERSECTION OF VERTICAL PLANES AND CEILINGS.
G. ALL ELECTRICAL CONDUITS AND OTHER ELECTRICAL RACEWAYS PASSING THROUGH FIRE RATED CEILINGS, SLABS, CABLE TRAYS, WALLS AND PARTITIONS SHALL BE SEALED TO PREVENT THE SPREAD OF FIRE, SMOKE, AND GASSES. USE A UL LISTED AND APPROVED FIRE-STOP MATERIAL EQUAL TO RATING OF A WALL OR A FLOOR SLAB PENETRATED; INSTALLATION OF FIRE-STOP MATERIAL SHALL BE IN ACCORDANCE WITH MANUFACTURERS INSTRUCTIONS.
H. UNLESS WRITTEN PERMISSION IS GRANTED BY THE ARCHITECT, NO MATERIAL SHALL BE MOUNTED ON THE EXTERIOR WALLS OR PARAPET TOP OF THE BUILDING.
I. ALL ROTATING ELECTRICAL EQUIPMENT SHALL BE SUPPLIED WITH A FLEXIBLE, LIQUID-TIGHT CONDUIT WITH APPROPRIATE SLACK AND SHALL NOT EXCEED THIRTY-SIX (36) INCHES.
J. ALL POWER WIRING SHALL BE INSTALLED IN CONDUIT.
K. TELEPHONE WIRES SHALL BE PLENUM RATED CABLE FOR MOUNTING IN CEILING SPACES WITHOUT CONDUIT UNLESS OTHERWISE NOTED.
L. ALL WIRES FOR ALL SYSTEMS SHALL BE CONTINUOUS FROM SWITCH TO TERMINAL OR FURTHEST OUTLET. NO JOINTS SHALL BE MADE EXCEPT IN PULL, JUNCTION OR OUTLET BOXES, OR IN PANEL OR SWITCHBOARD GUTTERS.
M. ALL RECEPTACLE, CONTROL DEVICE, AND SWITCH MOUNTING HEIGHTS SHALL BE COORDINATED WITH ARCHITECTURAL ELEVATIONS PRIOR TO ROUGH-IN.
3.06 GROUNDING
A. ALL EQUIPMENT SHALL BE PROPERLY GROUNDED AS INDICATED ON DRAWINGS AND AS REQUIRED BY THE LATEST EDITION OF APPLICABLE CODES.
B. FURNISH AND INSTALL ALL GROUNDING CONDUCTORS, CONDUIT AND CLAMPS. THE SIZE OF THE GROUNDING CONDUCTORS SHALL BE NOT LESS THAN THAT SPECIFIED IN THE NEC.
C. BUILDING GROUNDING SYSTEM RESISTANCE TO GROUND SHALL NOT EXCEED 25 OHMS.
D. EACH BRANCH CIRCUIT SHALL BE EQUIPPED WITH CODE SIZE GREEN GROUND, EQUIPMENT WIRE (PER NEC 250-95) (NOT INDICATED ON DRAWINGS) WITHIN THE SAME CONDUIT FOR ALL CIRCUITS OF PANELBOARDS.
3.07 BRANCH CIRCUITS
A. NO MORE THAN THREE BRANCH CIRCUITS PERMITTED IN ONE CONDUIT UNLESS INDICATED OTHERWISE
3.08 IDENTIFICATION
A. THE FOLLOWING ITEMS SHALL BE EQUIPPED WITH NAMEPLATES:
1. ALL MOTORS, MOTOR STARTERS, CONTROL PANELS, MOTORS CONTROL REMOTE STATIONS.
2. ALL DISCONNECT AND SAFETY SWITCHES, MAIN DISTRIBUTION PANEL FEEDER OVERCURRENT DEVICES AND SPARES, CIRCUIT EQUIPMENT IN SEPARATE ENCLOSURES.
3. SPECIAL ELECTRICAL SYSTEMS SHALL BE PROPERLY IDENTIFIED AT JUNCTION AND PULL BOXES
4. ALL BRANCH CIRCUIT PANEL BOARDS SHALL HAVE IDENTIFYING ENGRAVED PLASTIC NAMEPLATES. ALSO, PROVIDE A TYPED DIRECTORY CARD FOR EACH BRANCH CIRCUIT PANELBOARD. THE CARD IS TO BE PLACED ON THE INTERIOR SIDE OF THE PANELBOARD DOOR BEHIND A CLEAR PLASTIC SHIELD. THE CARD SHALL IDENTIFY EACH CIRCUIT BY NUMBER, LOAD, AND LOCATION.
5. IN GENERAL, EQUIPMENT SHALL BE IDENTIFIED AS DESIGNATED ON THE ELECTRICAL DRAWINGS. NAMEPLATES FOR PANELBOARDS AND SWITCHBOARDS SHALL INCLUDE THE PANEL DESIGNATION, VOLTAGE AND PHASE OF THE SUPPLY. THE NAME OF THE MACHINE SHALL BE THE SAME AS THE NAME USED ON ALL MOTOR STARTERS, DISCONNECTS, AND P.B STATION NAMEPLATES FOR THAT MACHINE.
B. NAMEPLATES SHALL BE FABRICATED AS FOLLOWS:
1. NAMEPLATE MATERIALS SHALL CONSIST OF 3-PLY, 1/16" LAMINATED PLASTIC WITH WHITE CORE FOR LETTERING AND BLACK BACKGROUND.
2. CAPITAL LETTERS SHALL BE USED.
3. NAMEPLATES SHALL BE FASTENED WITH CADMIUM-PLATED SELF-TAPPING NO. 6 SCREWS 1/4" LONG
4. THE MINIMUM SIZE OF ALL NAME PLATES AND LETTERING SHALL BE 3/4" HIGH BY 2" LONG WITH 1/4" LETTERS.
3.09 PROTECTION
A. USE ALL MEANS NECESSARY TO PROTECT THE WORK AND MATERIALS FROM LOSS DURING AND AFTER INSTALLATION, AND PROVIDE ADEQUATE AND PROPER STORAGE FACILITIES DURING THE PROGRESS OF THE WORK. PROVIDE FOR THE SAFETY AND GOOD CONDITION OF ALL WORK UNTIL FINAL ACCEPTANCE OF THE WORK BY THE OWNER. REPLACE ALL DAMAGE OR DEFECTIVE WORK, MATERIAL, AND EQUIPMENT AT NO EXPENSE TO THE OWNER BEFORE REQUESTING FINAL ACCEPTANCE.
3.10 CLEANING OF EQUIPMENT, MATERIAL, AND PREMISES

A. SITE SHALL BE LEFT BROOM CLEAN AFTER COMPLETION OF WORK EACH DAY. UPON COMPLETION OF THE WORK, LEAVE THE PREMISES CLEAN OF ALL DIRT AND DEBRIS.
B. ALL EQUIPMENT AND MATERIAL CONNECTED WITH THIS PROJECT SHALL BE INSTALLED COMPLETE, THOROUGHLY CLEANED, AND ALL RESIDUE REMOVED FROM INSIDE SURFACES. EXTERIOR SURFACES OF ALL MATERIAL AND EQUIPMENT SHALL BE CLEANED AND DELIVERED IN A PERFECT, UNBLEMISHED CONDITION.
3.11 HANDLING OF WIRE AND CABLE
A. HANDLE WIRE AND CABLE SO AS TO AVOID DAMAGE TO CONDUCTORS AND TAKE EVERY PRECAUTION TO AVOID SHARP BENDING OR SCORING OF THE CABLE. CABLE SHALL NOT BE LAID NOR DRAGGED UPON THE GROUND.
B. THE CONTRACTOR SHALL BE REQUIRED TO REMOVE AND REPLACE AT HIS OWN EXPENSE ALL WIRE AND CABLE DAMAGED DUE TO IMPROPER HANDLING, AND SHALL PAY FOR THE NEW WIRE OR CABLE.
3.12 TESTING AND INSPECTIONS
A. THE CONTRACTOR SHALL OBTAIN AND PAY FOR ALL REQUIRED PERMITS AND ARRANGE ALL REQUIRED INSPECTIONS FOR THE EXECUTION OF THE WORK UNDER THIS CONTRACT.
B. THE CONTRACTOR SHALL REPLACE ALL DAMAGED OR DEFECTIVE EQUIPMENT OR WORK.
C. ALL CIRCUITS SHALL BE TESTED FOR CONTINUITY AND CIRCUIT INTEGRITY BY THE CONTRACTOR. ADJUSTMENTS SHALL BE MADE FOR CIRCUITS NOT COMPLYING WITH TESTING CRITERIA.
D. THE CONTRACTOR SHALL FURNISH ALL INSTRUMENTS AND PERFORM ANY ADDITIONAL TESTS REQUIRED BY THE AUTHORITY HAVING JURISDICTION. CONTRACTOR SHALL ALSO CORRECT ALL FAILURES AND REPLACE ANY DAMAGED PORTIONS OF THE WORK RESULTING FROM THOSE TESTS. THE COST OF THE FOREGOING ITEMS SHALL BE PAID BY THE CONTRACTOR.
E. THE CONTRACTOR SHALL FURNISH THE OWNER CERTIFICATES OF INSPECTION AND APPROVAL BY THE ELECTRICAL INSPECTION AUTHORITY ON ALL WORK COMPETED AS REQUIRED.
F. CONTRACT DRAWINGS AND SPECIFICATIONS, GENERAL PROVISIONS OF THE CONTRACT, INCLUDING GENERAL AND SUPPLEMENTARY CONDITIONS, ELECTRICAL PROVISIONS AND DIVISION-1 SPECIFICATION SECTIONS APPLY TO WORK OF THIS SECTION.
G. RESPONSIBILITIES OF INSTALLING CONTRACTORS
A.A. GENERAL CONTRACTOR (GC)
a. ENSURE THAT ALL CONTRACTORS IDENTIFIED AS THE CONTRACTOR RESPONSIBLE FOR ACCEPTANCE TESTING AND COMPLETION OF THE WSEC CERTIFICATE(S) OF ACCEPTANCE ARE CERTIFIED BY THE STATE OF WASHINGTON OR ITS DESIGNATED BODY TO CONDUCT EACH RESPECTIVE TEST.
A.A. ELECTRICAL CONTRACTOR (EC)
a. VERIFY PROPER INSTALLATION AND PERFORMANCE OF ALL ELECTRICAL SERVICES PROVIDED.
b. COMPLETE WSEC CERTIFICATE(S) OF INSTALLATION AND MANUFACTURER'S PRE-START CHECKLISTS PRIOR TO SCHEDULING STARTUP/PROGRAMMING OF LIGHTING CONTROL EQUIPMENT.
i. RETAIN CERTIFICATE(S) OF INSTALLATION IN A 3-RING BINDER IN AN ORGANIZED FASHION. BINDER IS TO REMAIN ON THE JOB SITE
ii. MAKE CERTIFICATE(S) OF INSTALLATION AVAILABLE FOR BUILDING INSPECTOR'S REVIEW.
iii. RETAIN CALIBRATION RECORDS FOR EQUIPMENT PROVIDED WITH MANUFACTURER CALIBRATED SENSORS IN THE CERTIFICATE(S) OF INSTALLATION BINDER.
iv. CORRECT LABELING OF ALL CIRCUITS WITH CONNECTED EQUIPMENT.
c. COMPLETE THE CERTIFICATE(S) OF ACCEPTANCE PER THE CONTRACT DOCUMENTS.
i. THE COMPANY INSTALLING THE LIGHTING SYSTEMS MUST BE AN AUTHORIZED LIGHTING CONTROLS ACCEPTANCE TEST EMPLOYER CERTIFIED BY A LIGHTING CONTROLS ACCEPTANCE TEST TECHNICIAN CERTIFICATION PROVIDER OR INCLUDE IN THEIR BID THE COST OF RETAINING AND OVERSEEING A CONTRACTOR WHO IS AN AUTHORIZED LIGHTING CONTROLS ACCEPTANCE TEST EMPLOYER TO COMPLETE THE ACCEPTANCE TESTING.
ii. ALL REQUIRED ACCEPTANCE TESTING MUST BE COMPLETED BY A LIGHTING CONTROLS ACCEPTANCE TEST TECHNICIAN EMPLOYED BY THE LIGHTING CONTROLS ACCEPTANCE TEST EMPLOYER.
iii. RETAIN CERTIFICATE(S) OF ACCEPTANCE IN A 3-RING BINDER IN AN ORGANIZED FASHION. BINDER IS TO REMAIN ON THE JOB SITE
iv. SUCCESSFUL COMPLETION OF THE REQUIRED ACCEPTANCE TESTS IS THE RESPONSIBILITY OF THE INSTALLING CONTRACTOR. ANY COSTS ASSOCIATED WITH MODIFICATIONS NECESSARY TO OBTAIN COMPLIANCE AND RE-TESTING OF SYSTEMS SHALL BE INCLUDED IN THE BASE BID OF THIS PROJECT.
3.13 TELEPHONE AND DATA
A. PROVIDE AND INSTALL COMPLETE SYSTEM OF CONDUIT WITH PULL LINES, BACKBOARDS, EQUIPMENT RACK, PULL BOXES, JUNCTION BOXES, OUTLET BOXES, AND PLASTER RINGS, FOR TELEPHONE/ DATA SYSTEMS, TO BE INSTALLED AS PART OF THIS BUILDING CONTRACT.
B. PROVIDE OVERHEAD CONDUIT CONNECTIONS BETWEEN THE MAIN TELECOM ROOM AND THE NETWORK RACK.
C. A FIRE RATED PLYWOOD BACK-BOARD SHALL BE PROVIDED OVER THE BACK OF THE TELEPHONE ROOM AS SHOWN ON THE DRAWINGS. PROVIDE NATIONAL ELECTRICAL CODE (NEC) SIZED GROUND CONDUCTOR FROM THE TELEPHONE BACKBOARD TO MAIN BUILDING GROUNDING SYSTEM.
D. THE TELEPHONE AND DATA CONDUITS SHALL BE FROM OUTLET BOX TO 6" ABOVE THE ACCESSIBLE CEILING SPACE. CONDUIT RUNS OVER 200 FEET IN LENGTH, OR WITH MORE THAN TWO 90 DEGREE BENDS, SHALL BE PROVIDED WITH ACCESSIBLE PULL BOXES OF SIZES AS APPROVED BY THE OWNER.
E. PULLWIRES SHALL BE INSTALLED IN ALL TELEPHONE/ DATA CONDUITS CONTINUOUS AND WITHOUT SPLICES, PROJECTING 3/8 INCHES OUT OF EACH END OF CONDUIT/OUTLET BOX. EQUIP ALL JUNCTION BOXES WITH PLASTER RINGS.

A: L:\PROJECT\2021\22-080 SEQUIM SCHOOL DISTRICT BOARD ROOM\22-080 E-SPECS - 2023-09-06 - BETHELEHEM ZEMARIAS



543 Main St, Suite 101
Edmonds, WA 98020
o. 425-673-7269 c. 907-317-5040
www.design2LAST.com

SEQUIM SD #323
Office Board Room & 2nd Floor Office Remodel
503 N Sequim Ave, Sequim, WA 98382

REVISION SCHEDULE table with columns for revision number, description, and date.

Table with columns for JOB NO., DATE, DRAWN, REVIEWED and their corresponding values.

SHEET NAME: ELECTRICAL SPECIFICATIONS

SHEET NO.: E-3.2

Professional Engineer logo for Design West Engineering, Mechanical • Electrical • Energy Consultants, with contact information.

DOCUMENT 004100 - BID FORM (ADDENDUM 2)

BIDS WILL ONLY BE RECEIVED AT:

Owner:	Sequim School District 503 North Sequim Ave, Sequim, WA 98382
Bids Must Be Received By:	September 19 th at 2:00 PM (ADDENDUM 2)
Owner’s Representative:	Wenaha Group, Chris Marfori, Project Manager

BID IS FOR THE PROJECT REFERENCED:

Project No.	2023-02-1001
Project Location:	503 North Sequim Avenue, Sequim, Washington 98382
Architect:	design2 LAST, Inc.

The undersigned Bidder acknowledges receipt of, and declares that it has examined and is fully familiar with, the Bidding Documents, the Project Manual, the Drawings, the Specifications, the Contract Documents, and the Addenda specified below.

The Bidder further declares that it has inspected the site and familiarized itself with local conditions that may affect the cost of the Work, the time for performance of the Work, and/or the difficulty thereof; that it has satisfied itself as to nature, location, character, quality, and quantity of the Work required by the Contract, including materials and equipment, and including the fact that the description of quantities of work and materials as included in the Bid is brief and is intended only to indicate the general nature of the work and to correlate said quantities with detailed requirements in the Contract Documents; that this Bid is made according to provisions and under terms of the Contract Documents, which are hereby made a part of this Bid; and that Bidder has carefully checked all of the words and figures that compose this Bid.

IN SUBMITTING THE BID, THE UNDERSIGNED AGREES:

1. To furnish all material, labor, tools, equipment, management, supervision, and utility and transportation services necessary to perform and complete, in a workmanlike manner, all of the Work required for construction of the Project in accordance with the Contract Documents and contained or referenced in the Bidding Documents. Bidder acknowledges that the Contract Documents consist of the Public Works Contract (Document 007200.01) and General Conditions (Document 007200.02); Supplemental Conditions; Drawings; Specifications; and Addenda.
2. The Base Bid reflected in Attachment 01 to this Bid Form, and the Alternatives reflected in Attachment 02 to this Bid Form, represent full compensation for satisfactory performance of all obligations under the Contract Documents.
3. Bidder has satisfied itself as to the character, quality, and quantity of surface and subsurface materials or obstacles to be encountered insofar as this information is reasonably ascertainable from an inspection of the site, including all exploratory work done by Owner, as well as from the Drawings and Specifications made a part of the Contract Documents.

4. The Owner may continue to occupy parts of the site and may employ, under separate contracts, other contractors at or near the site concurrently with the Work of the Contract. As a result, the Bidder will have limited use of the premises for work, storage, access, parking, and equipment, and Bidder will be required to coordinate the use of the premises under the direction of the Owner. Further, adjoining areas may be conducting normal operations during the Work, and Bidder should anticipate pedestrian and traffic congestion, limited parking, and the requirement that the Work be coordinated with ongoing operations. Bidder acknowledges that its Bid is based upon a schedule and assumptions that incorporate these conditions, and upon a schedule that complies with schedule requirements set forth in the Contract Documents.
5. To hold its Bid open for sixty (60) consecutive calendar days from the date designated for opening of bids.
6. To accept the provisions of the Instructions to Bidders, including the disposition of Bid Security.
7. Within ten (10) days of award, to execute and deliver the Contract, to furnish the Performance Bond and Payment Bond in accordance with the requirements of the Contract Documents, to deliver the required certificates of insurance, and to perform the other obligations specified in the Contract Documents.
8. To commence the Work of the Contract upon receipt of a written Notice to Proceed and complete all such Work by the dates for Substantial Completion and Final Completion, respectively, specified in the Contract Documents.
9. The requirements of Chapter 39.12 RCW (“Prevailing Wages”) are included as a part of this Bid, and the undersigned agrees to comply with all of the provisions thereof.
10. The undersigned Bidder has enclosed the required Bid Security in the amount of five percent (5%) of the Base Bid in the form required by and otherwise in accordance with the Instructions to Bidders. The Bidder agrees to enter into the Contract with the Owner in the form provided, in a timely manner, and on the terms stated in its Bid and to furnish in a timely manner the Payment Bond and Performance Bond, certificates of insurance, Contractor’s Construction Schedule, and all other documents required by the Contract Documents. Bidder agrees that, should it fail or refuse to enter into the Contract or fail to furnish such documents, the amount of the Bid Security will be forfeited to the Owner as liquidated damages, not as a penalty. By submitting its Bid and Bid Security, the Bidder agrees that any forfeiture is a reasonable prediction at the time of Bid submittal of future damages to the Owner.
11. It satisfies the Bidder responsibility criteria listed in RCW 39.04.350(1).
12. Failure to timely complete and submit this Bid Form, Attachments 1-7, or the inclusion of false information in any aspect of its Bid, will render this Bid nonresponsive.
13. The Owner reserves the right to reject any or all bids and to waive informalities and irregularities.

BIDDER SUBMISSION INFORMATION

Bidder Information	
Legal Name of Bidder:	
Type of Entity (e.g., corporation, partnership, joint venture, or sole proprietor):	
Business Address:	
Business Phone No:	
Website (if applicable):	
Email:	
Washington State Contractor’s Registration No.: <i>NOTE: Failure to have required license at time of bid opening will result in rejection of the Bid.</i>	
Contractor’s License Expiration Date:	
Federal Tax Identification Number (TIN):	
Unified Business Identifier Number (UBI):	
Bidder’s Authorized Representative Information	
Name:	
Title:	
Phone No:	
Email:	
Bid Bonding Company Information	
Bonding Company Name:	
Bonding Company Address:	
Bonding Company Phone No:	
Bonding Agent Name:	
Bonding Agent Email:	

(Continued on next page)

ADDENDA ACKNOWLEDGEMENT

Bidder acknowledges receipt, review, and full consideration of those Addenda indicated below. *(If a given addendum number was not utilized, that row should be left blank.)*

Number:	Addendum Dated:	Bidder Authorized Representative Initials
Addendum #1	August 28, 2023	
Addendum #2	September 8, 2023	
Addendum #3		
Addendum #4		
Addendum #5		
Addendum #6		

ATTACHMENTS REQUIRED

Bidder has fully completed and included the following attachments to this Bid Form, which are required for the Bid to be considered responsive.

Number:	Description:	Bidder Authorized Representative Initials
Attachment 1	Bid Price Form	
Attachment 2	Bid Alternates Form	
Attachment 3	Insurance Binder	
Attachment 4	Bid Security	
Attachment 5	Non-Collusion Affidavit	
Attachment 6	Statement of Non-Segregated Facilities	
Attachment 7	Certification of Compliance with Wage Payment Statutes	

Dated: _____

Name of Authorized Representative

Signature of Authorized Representative

END OF BID FORM
(Complete and include Attachments 1-7)